

Użytkownik:	Mariusz Budzik (Elektronika S.A.)		
Nazwa:			
Data:	2016-03-03	Ostatnia aktualizacja:	2016-03-03
		Wydanie:	20160225A/20151211A

Dane doboru

Webcode:	YARV3	Przepływ [m³/h]:	1 480
Rodzina:	YARDY EV3	Ciśnienie stat. [Pa]:	0
Wersja:	MVP	Wysokość [m n.p.m.]:	0
Model:	88	Liczba rzędów węzownicy głównej:	4
Prędkość:	VI (C)	Wysokość [m n.p.m.]:	2T-2 PIPES

Chłodzenie

Wydajności

Wydajność całkowita [kW]:	6,96
Wydajność odczuwalna [kW]:	5,37
Wykroplenie wody [g/h]:	3 383

Powietrze	Wejście	Wyjście
ts [°C]:	27,0	16,1
tm [°C]:	18,9	13,3
j [%]:	47,0	73,2

Ciecz: glikol etylenowy 30%

Przepływ [l/h]:	1 195
Spadek ciśnienia [kPa]:	8,6
Temperatura We. [°C]:	7,0
Temperatura Wy [°C]:	12,0

Wymiary i masa

Wysokość [mm]:	570
Szerokość [mm]:	1 500
Głębokość [mm]:	220
Masa bez cieczy [kg]:	38,0

Dane elektryczne (**)

Zasilanie [V-ph-Hz]:	230-1-50
Pobór mocy [W]:	197
Prąd [A]:	0,88

Grzanie

Wydajności

Wydajność całkowita [kW]:	-
---------------------------	---

Powietrze	Wejście	Wyjście
ts [°C]:	-	-
tm [°C]:	-	-
j [%]:	-	-

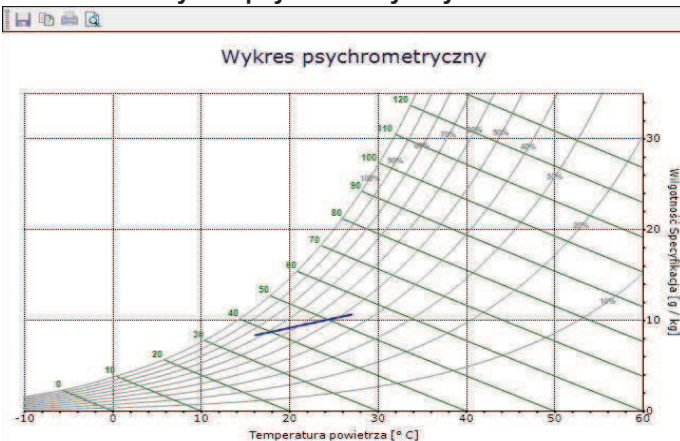
Ciecz: -

Przepływ [l/h]:	-
Spadek ciśnienia [kPa]:	-
Temperatura We. [°C]:	-
Temperatura Wy [°C]:	-

Hałas (*)

Poziom ciśnienia akust. [dB(A)]	57
Poziom mocy akust. [dB(A)]	66

Wykres psychrometryczny



Wykres psychrometryczny



[*] Warunkach nominalnych: Poziom ciśnienia akustycznego w dB (A) w środowisku, o pojemności

[**] Warunki nominalne: Cooling: room temperature 27°C D.B.; 19°C W.B.; input water temperature 7°C with Δt 5°C.

Zdjęcia mają charakter wyłącznie informacyjny i mogą nie reprezentować w sposób dokładny modeli i wyposażenia, które jest tematem tego dokumentu.

Declared conditions of use

Air handling fan coil for indoor use, intended to be used for air handling (summer and winter air conditioning) domestic or similar indoor rooms.

The unit is not designed to be installed in rooms used for laundry purposes (IEC EN 60335-2-40).

The units comply with the following Directives:

- 2006/42/EC Machinery Directive
- Low voltage Directive 2006/95/EC
- Electromagnetic compatibility Directive 2004/108/EC
- Pressure equipment directive 97/23/EEC (PED)
- Regulation n.327/2011/UE implementing Directive 2009/125/EC EVP

Construction features

Covering cabinet composed of:

Sides and front panel made of thick galvanised and painted steel sheet metal (Grey white C21≈RAL 9002), coated with a protective polyvinyl chloride film and insulated internally with noise-absorbing and self-extinguishing cladding;

Outlet grille on the upper part of the fan coil, made of heat-resistant ABS polymer with fixed flaps.

Access doors to the technical compartments and the control panels fitted with a locking screw. Galvanised steel sheet structure complete with anti-condensate self-extinguishing insulation on the sides, back and front panels of the unit and the condensation drain pan with natural drainage complete with anti-condensate self-extinguishing insulation. Heat exchanger featuring a finned coil with copper pipes and aluminium fins (rows consisting of a continuous row of pipes with no interruptions), brass die-cast collectors complete with a patented low pressure drop hydraulic distributor.

Threaded connections (gas female Ø 3/4" for the main coil, gas female Ø 1/2" for the additional coil) on the left side of the unit reversible on the right directly on site, having an air vent, drain valve and antirotation lock for a quick connection, with no key or counter key being required.

A centrifugal fan with a double inlet with statically and dynamically balanced aluminium or ABS fans.

AC motor coupled directly to 6 speeds of which 3 connected in the terminal block, equipped with internal thermal protection with condenser permanently fitted.

Power supply voltage: 230 V–1 ph–50 Hz.

Quick coupling connectors for the direct connection to the commands and controls.

Polypropylene mesh renewable filter (filter class G1)

Version

feet.

Opcje i akcesoria zamontowane

VALVE OF PRINCIPAL COIL: E2-2V-2 WAY VALVE 2 PIPE SYS

DRAIN PAN: VERTICAL DRAIN PAN

BASIC CONTROL: TCV2-CONTROL PANEL

Akcesoria dostarczane luzem

E928010010 - KPC - Feet with pipe cover - ONLY VERTICAL INSTALLATION WITH CABINET

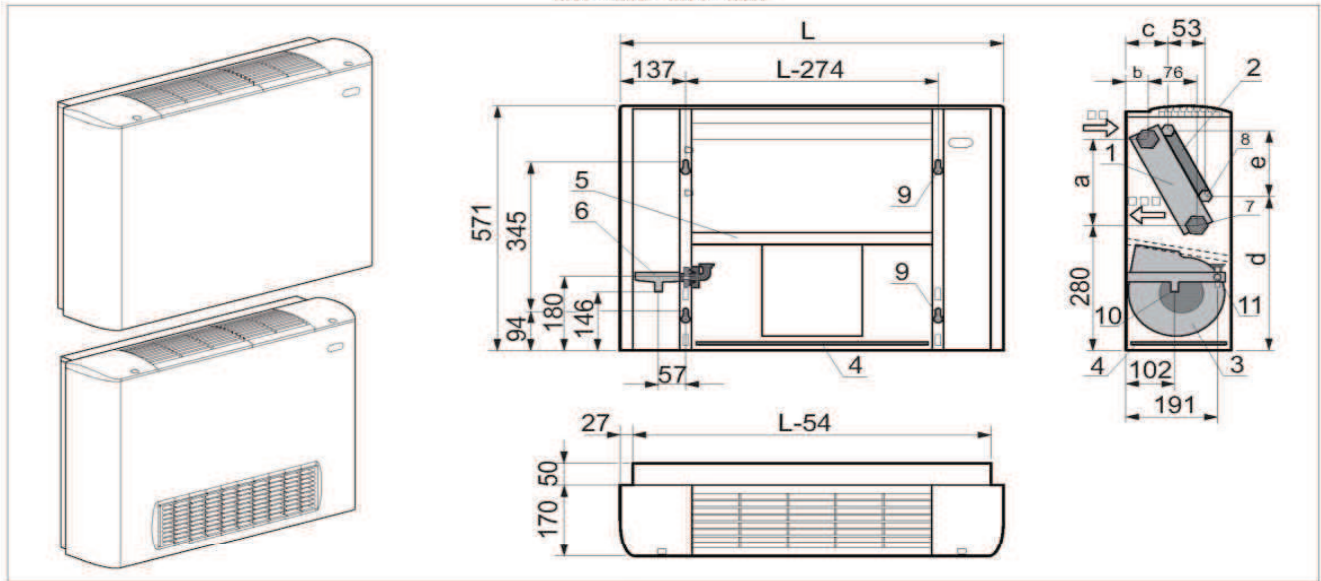
Functioning limits

Maximum exchanger pressure: 6 bar.

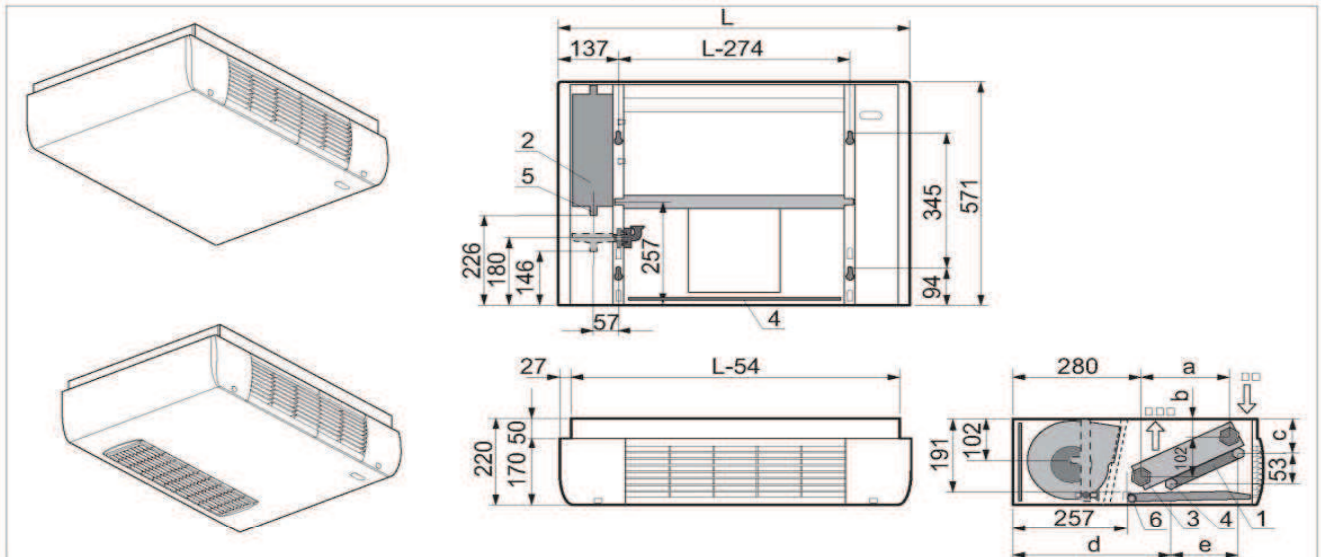
Power supply voltage: 230 V ±10%.

Wymiary

MVP - MXP MVT - MXT



MXP - MXT



- 1 Batteria aggiuntiva (accessorio)
- 2 Vaschetta ausiliaria raccogli-condensa (accessorio)
- 3 Attacchi idraulici batteria principale 3/4" F
- 4 Attacchi idraulici batteria aggiuntiva 1/2" F
- 5 Scarico condensa vaschetta aggiuntiva (d.16mm)
- 6 Scarico condensa vaschetta principale (d.16mm)

- 1 Additional coil (accessory)
- 2 Auxiliary condensation drain pan (accessory)
- 3 Main battery hydraulic connections 3/4" F
- 4 Additional battery hydraulic connections 1/2" F
- 5 Additional condensate drain pan (d.16mm)
- 6 Main condensate drain pan (d.16mm)

- 1 Batterie auxiliaire (accessoire)
- 2 Bac principal de récupération de la condensation (accessoire)
- 3 Raccords hydrauliques batterie principale 3/4" F
- 4 Raccords hydrauliques batterie supplémentaire 1/2" F
- 5 Évacuation de la condensation bac supplémentaire (d.16mm)
- 6 Évacuation de la condensation bac principal (d.16mm)

- 1 Zusatzregister (Zubehör)
- 2 Zusätzliche Kondensatauffangwanne (Zubehör)
- 3 Hydraulikanschlüsse Hauptregister 3/4" F
- 4 Hydraulikanschlüsse Zusatzbatterie 1/2" F
- 5 Kondenswasserablass Zusatzwanne (d.16mm)
- 6 Kondenswasserablass Hauptwanne (d.16mm)

- 1 Bateria adicional (accessorio)
- 2 Bandeja auxiliar de recogida de condensados (accessorio)
- 3 Conexiones hidráulicas batería principal 3/4" F
- 4 Conexiones hidráulicas batería adicional 1/2" F
- 5 Descarga de condensación bandeja adicional (d.16mm)
- 6 Descarga de condensación bandeja principal (d.16mm)

Models	15	20-24	25-30-34	40-45-48	55-58-60-74-80-88	
		20-24	30-34	45-48	60-74-80-88	
L mm	700	800	1000	1200	1500	
		a	b	c	d	e
15-20-25-30-40	mm	280	51	105	354	156
45-55-60-80	mm	280	51	105	354	156
24-34	mm	280	59	111	347	152
48-58-74-88	mm	280	59	111	347	152